



# GAT MONTHLY MEMBERSHIP PROGRESS REPORT

Results as of: 4/30/2024

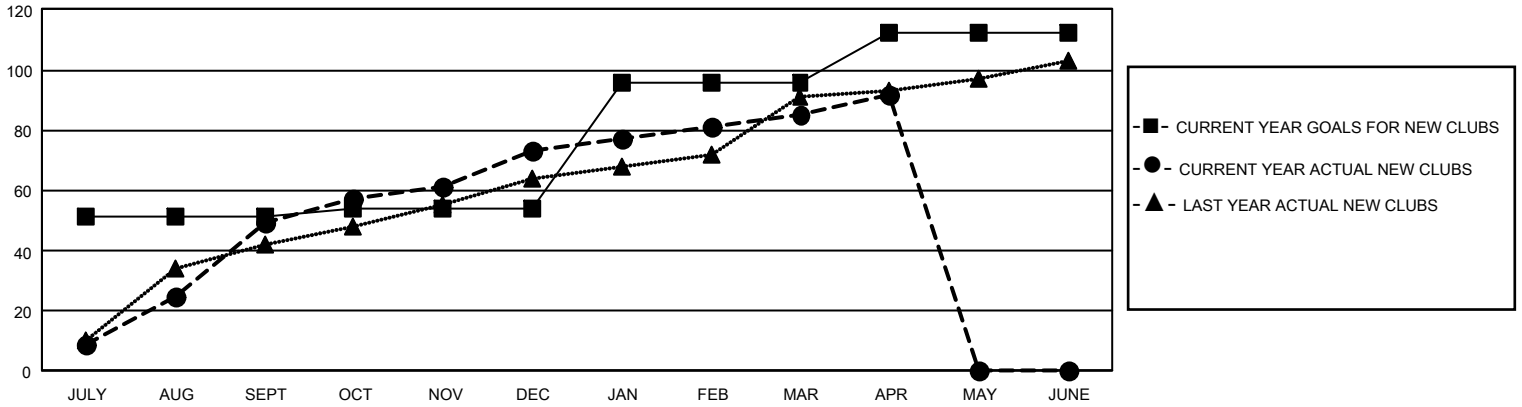
## GMT Constitutional Area 6 - I, Group E

REPORT DOES NOT INCLUDE CLUBS IN UNDISTRICTED AREAS.

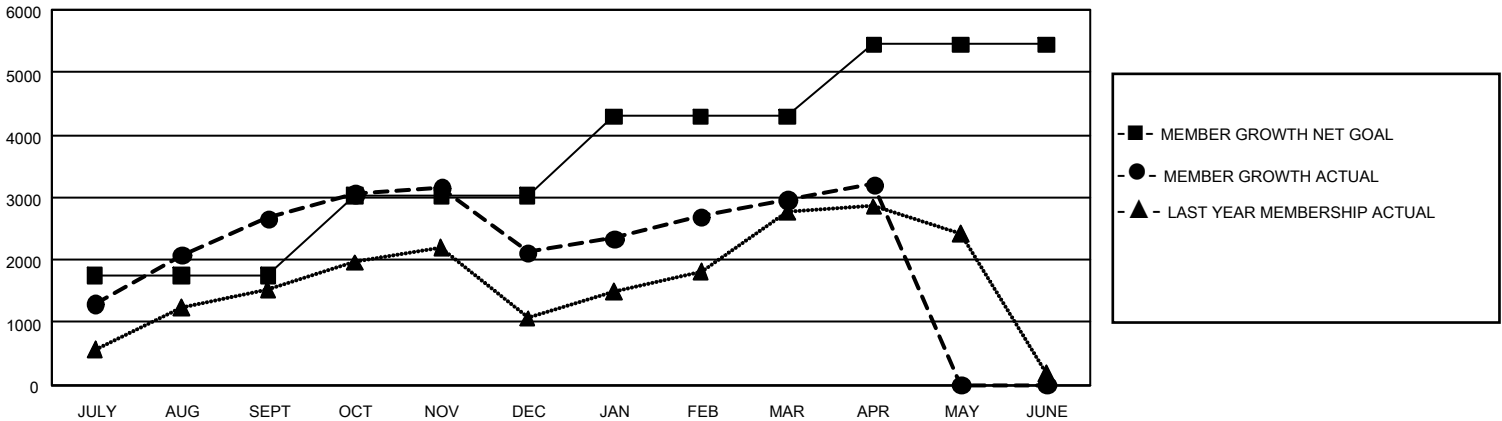
Clubs			
RESULTS FOR 2023-2024			
QUARTER	NEW CLUB GOAL	NEW CLUBS	DROPPED CLUBS
JULY/AUG/SEPT	153	49	15
OCT/NOV/DEC	9	24	45
JAN/FEB/MAR	126	12	11
APR/MAY/JUNE	48	7	2

Members			
RESULTS FOR 2023-2024			
QUARTER	MEMBER GROWTH NET GOAL	MEMBER GROWTH ACTUAL	DROPPED MEMBERS ACTUAL (including transfers)
JULY/AUG/SEPT	1753	4,025	1,185
OCT/NOV/DEC	1270	1,912	2,391
JAN/FEB/MAR	1270	1,524	535
APR/MAY/JUNE	1150	432	180

GOALS AND ACTUAL NEW CLUBS CUMULATIVE



GOALS AND ACTUAL MEMBERS CUMULATIVE



<b>DROPPED CLUBS: 73</b>	1,036 CLUBS OF 1,547 ADDED 1 OR MORE NEW MEMBERS	<b>GENDER DISTRIBUTION</b>	
		MALE 38,240 (78.21%) FEMALE 10,652 (21.79%) NON BINARY 0 (0.00%) PREFER NOT TO ANSWER 2 (0.00%)	
<b>DROPPED MEMBERS</b>		<a href="#">CLICK HERE FOR CUMULATIVE MEMBERSHIP DATA</a>	TOTAL FAMILY UNIT MEMBERS 15,983
DECEASED 141 CLUB CANCELLED 1,012 OTHER 3,107 <b>TOTAL 4,260</b>	FAMILY MEMBERS PAYING HALF DUES 8,543		